

# Rocky View Foundation



Providing seniors  
with a delightful  
place to call *home*



Rocky View Foundation provides affordable housing options to independent seniors (65+) living in the Rocky View, Alberta region.

There are many housing options for seniors to choose from in our region. So, what makes us different?

1. Our rates. As a non-profit organization and registered charity, we keep our rates below market value ensuring our residents are provided with affordable housing options at an incredible value.
2. Our people. Our staff are educated, specifically trained and have years of experience working in seniors' facilities. They treat residents like family and make sure everyone feels at home.
3. Our variety of housing options. We offer independent living opportunities in apartment-style manors and supportive living (SL2) in our lodges.

## Our History:



The front entrance at Rocky View Lodge in 1964.



Big Hill Lodge in the 1970s.

Our history goes back to the 1960s with the construction of the original Rocky View Lodge in Crossfield. In 2009, we were awarded a grant of \$4.6 million from the Government of Alberta's Affordable Supportive Living Initiative Program to re-build the new two-storey Rocky View Lodge. Breaking ground in 2010, Rocky View Lodge was officially opened to residents in the summer of 2012.

In the late 1970s, Big Hill Lodge in Cochrane was opened. The two-storey building originally accommodated 65 residents, but in 1982, an additional 10 suites and a multi-purpose activity room were built, allowing more residents to join the Lodge.

In 2009 and with \$2.4 million, we renovated Diamond Jubilee Manor & Suites in Airdrie to include an additional 12 affordable-housing units. The new Diamond Jubilee Manor & Suites was re-opened in 2010 and now accommodates tenants in 32 suites.

As of January 2017, we took over management of the Evergreen Manor in Cochrane. This manor houses singles and couples in 22 units.

As times have changed, so have we. We're all about progressive innovation and continue to transform our homes in anticipation of making them better places for our tenants and residents to live.

## Our new Rocky View Lodge:



## Airdrie Lodge under development:



## Type of Seniors Housing we Operate:

### **Independent Living – Manors**

Independent living manors are one-bedroom apartment units serving singles and couples who are aged 65+. These comfortable units are for seniors who are fully able to cook, clean and live independently.

- 1.) Crossroads Manor, Beiseker – 8 Units
- 2.) Diamond Jubilee Manor, Airdrie – 32 Units
- 3.) Dr. Whillans Manor, Crossfield – 24 Units
- 4.) Evergreen Manor, Cochrane – 22 Units

### **Supportive Living (SL2) Lodges:**

Supportive living (level 2) lodges are for seniors 65+ who are functionally independent, with or without the help of existing community-based services.

All lodges are fully licensed by the Government of Alberta and operate in compliance with accommodation standards. Our lodges are funded by Provincial government grants, requisitions to our partnering municipalities and rent paid by residents.

- 1.) Big Hill Lodge, Cochrane – 75 Suites
- 2.) Rocky View Lodge, Crossfield – 65 Suites
- 3.) New Lodge, Airdrie – 92 Suites (opening 2022)

## **Board of Directors:**

Our Board of Directors is composed of representatives from Airdrie, Beiseker, Cochrane, Crossfield, Irricana and Rocky View County.

The Board meets monthly to conduct Foundation business.

### **Current Directors are:**

Susan Flowers, Chair  
Councillor, Town of Cochrane

Peter Brown, Vice-Chair  
Mayor, City of Airdrie

Al Schule,  
Councillor, Rocky View County

Warren Wise  
Mayor, Village of Beiseker

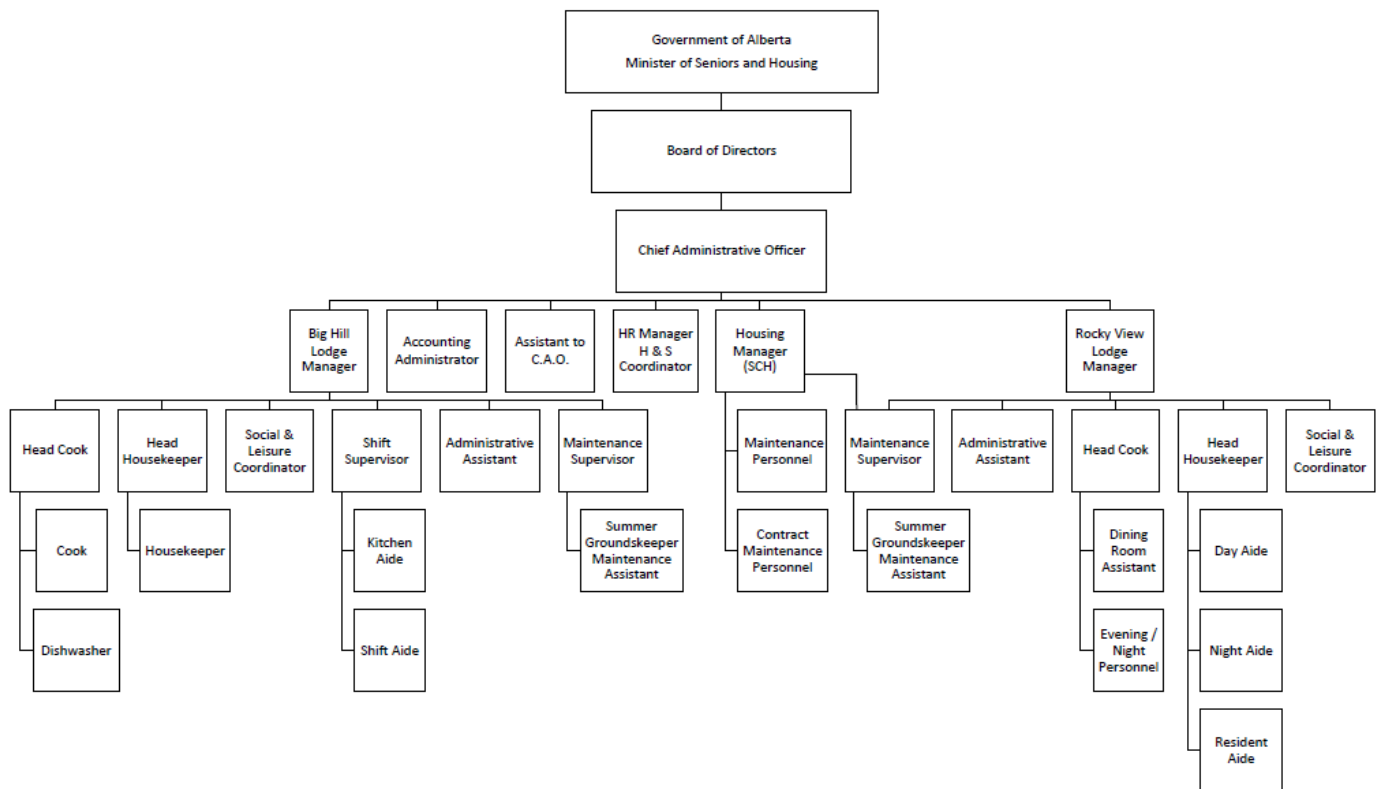
Debbie Day  
Councillor, Town of Irricana

Kevin Hanson  
Councillor, Rocky View County

Justin Gustafson  
Councillor, Town of Crossfield

Our Structure:

Organizational Chart:



**Current Projects:**

We are developing throughout the Rocky View region to meet the high demand for affordable seniors' housing. Projects include:

1. Conversion of the Airdrie Hampton Inn hotel to seniors' supportive living lodge
2. Construction of affordable independent living units in Bragg Creek on land donated by Dick Koetsier
3. Building a new Big Hill Lodge in Cochrane to replace the aging seniors' lodge of 75 residents

Strategic planning and fund development is underway to support our goals.