

Community Infrastructure and Strategic Growth (CISG) Standing Committee

Community Infrastructure

Lorne Stevens
Director of Community Infrastructure
December 10, 2024

Agenda

1. Overview
2. Directorate Structure
3. Key Deliverables
4. Notable Issues

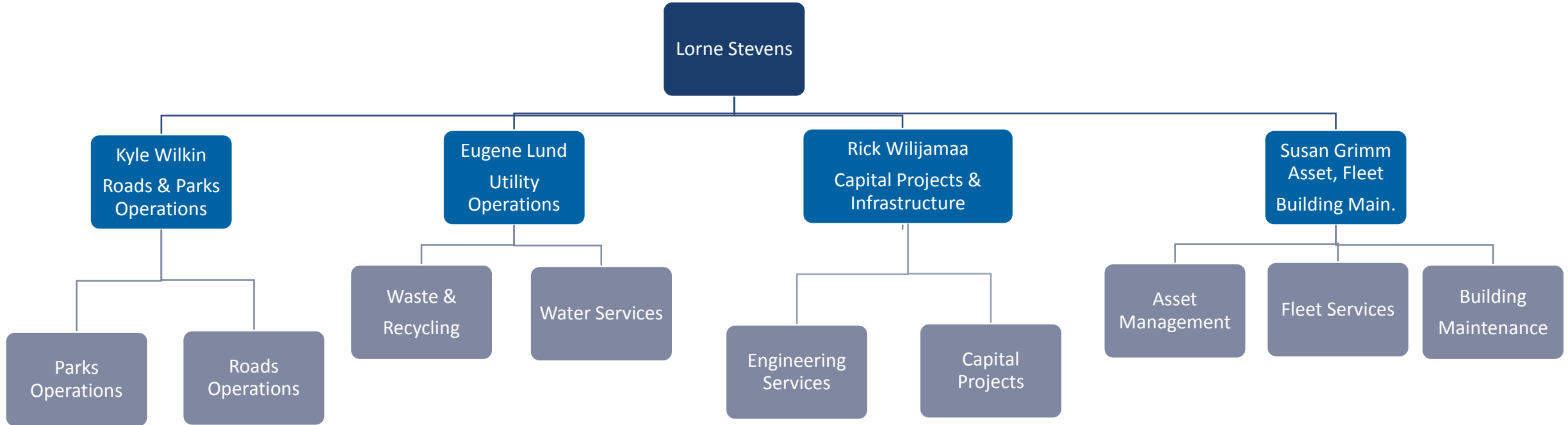




Overview of Directorate

- Community Infrastructure manages and operates a majority of the City's physical assets needed to support and provide essential services to Airdrie residents and businesses.
- Our Public Works and Parks teams provide road maintenance (including snow and ice control), park and open space maintenance including pathways, playgrounds and the City's cemetery.
- Water Services operations provide all citizen access to clean and reliable water.
- Waste & Recycling facilitates residential waste and recycling and organic effects and operate the Recycle Depot and Transfer Site.
- Capital Projects and Infrastructure manages the delivery of the City's major capital projects and through Engineering Services, ensures that all new developments and infrastructures are constructed to appropriate standards.
- Our Building Operations/Fleet teams ensure clean and well-maintained civic buildings, and ensures that our mobile equipment and fleet are maintained in order to ensure service delivery.
- Our Asset Management team also facilitates operational decision-making related to the condition of the City's linear assets.

Directorate Structure

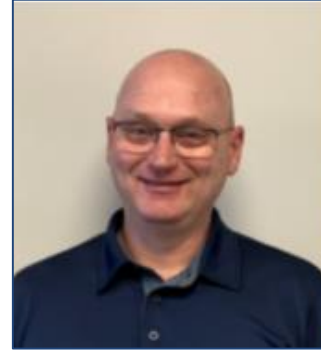


Director
Managers
Team Leaders

Managers



Kyle Wilkin
Manager,
Roads and Parks



Eugene Lund
Manager,
Utility Operations



Rick Wilijamaa
Manager,
Capital Projects & Infrastructure



Susan Grimm
Manager, Asset Management,
Fleet and Building Maintenance

Key Deliverables – Roads & Parks



- Responsible for all aspects of operations and maintenance (O&M) of City infrastructure, including:
 - Roads, laneways, and associated infrastructure such as traffic signals, signs, roadway markings, and sidewalk.
 - Parks and open spaces, including outdoor recreational facilities, cemetery, and the City's regional pathway system.
- Work with regional partners, regulatory authorities, community groups and internal/external stakeholders as it relates to the delivery of services
- Ensure a consistent, professional, and high level of service delivery for the benefit of the citizens and businesses of the City of Airdrie

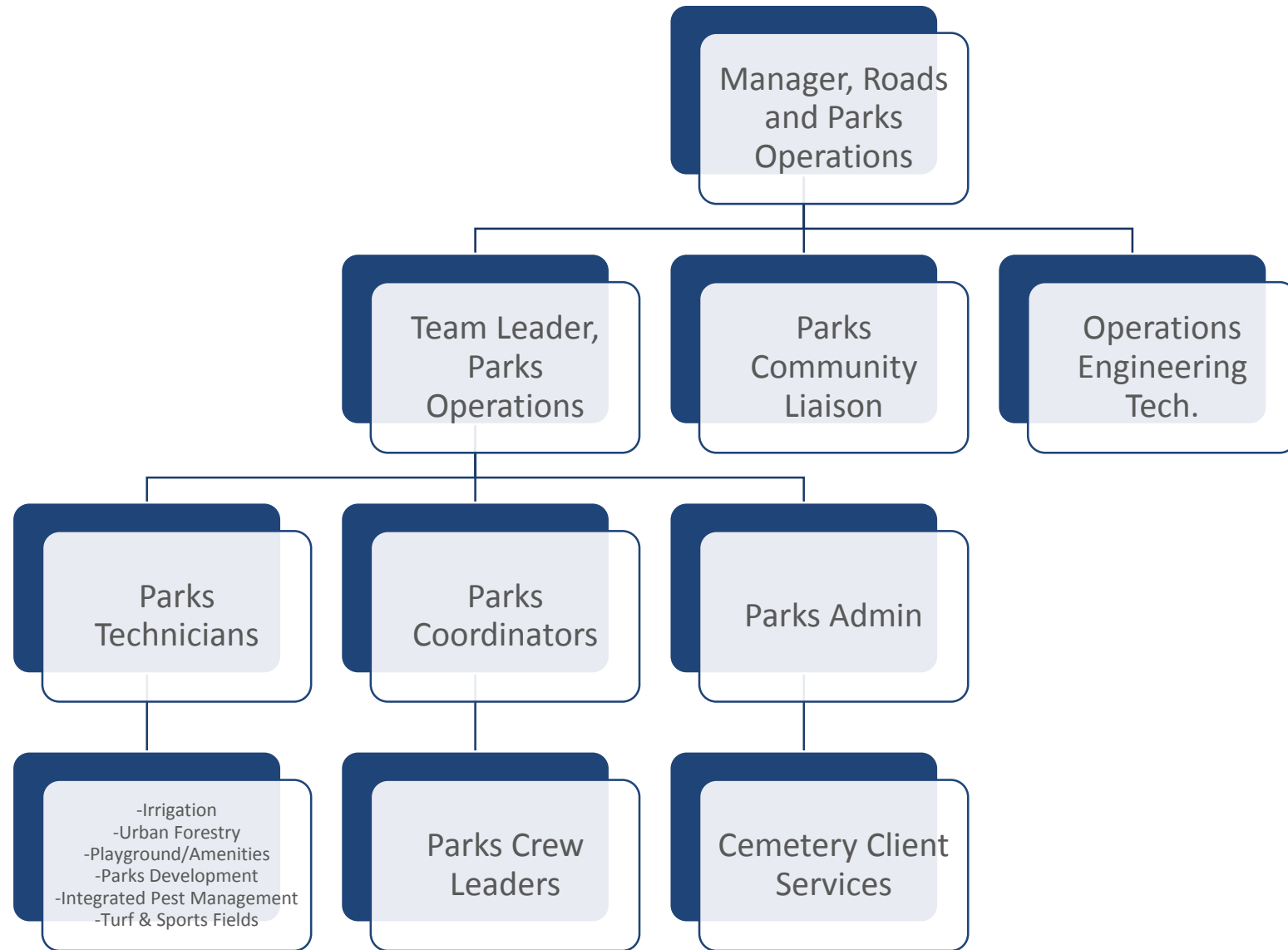
Road Operations Organizational Chart

Responsible for oversight and execution of roadway operational programs such as snow and ice control, spring clean up/street cleaning, road and sidewalk infrastructure inspections and maintenance, traffic control and signal operations and maintenance.



Parks Operations Organizational Chart

Responsible for maintaining and operating most outdoor city greenspaces and amenities including: regional pathway network including winter maintenance, pest management, urban forestry, horticulture, irrigation, sports fields/courts/rinks, playgrounds, dog parks, spray parks, municipal cemetery, and design review and inspection of park areas.



Key Deliverables – Waste & Recycling/ Water Services



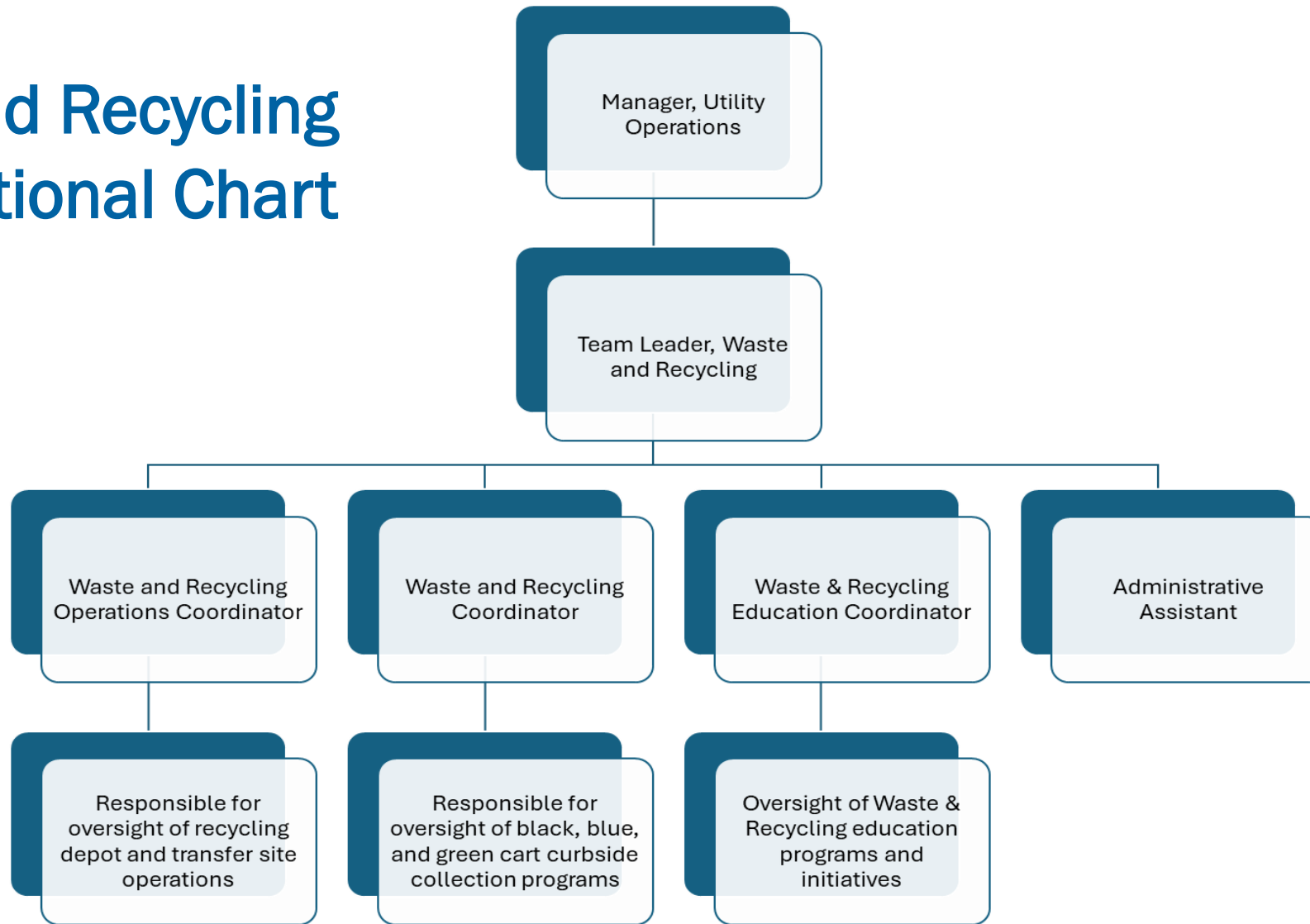
Waste & Recycling:

- Solid waste collection for residents via curbside collection and City's transfer site.
- Provide sustainable alternatives to landfilling waste through the curbside recycling/organic's programs and the recycling depot located at #21 East Lake Hill.

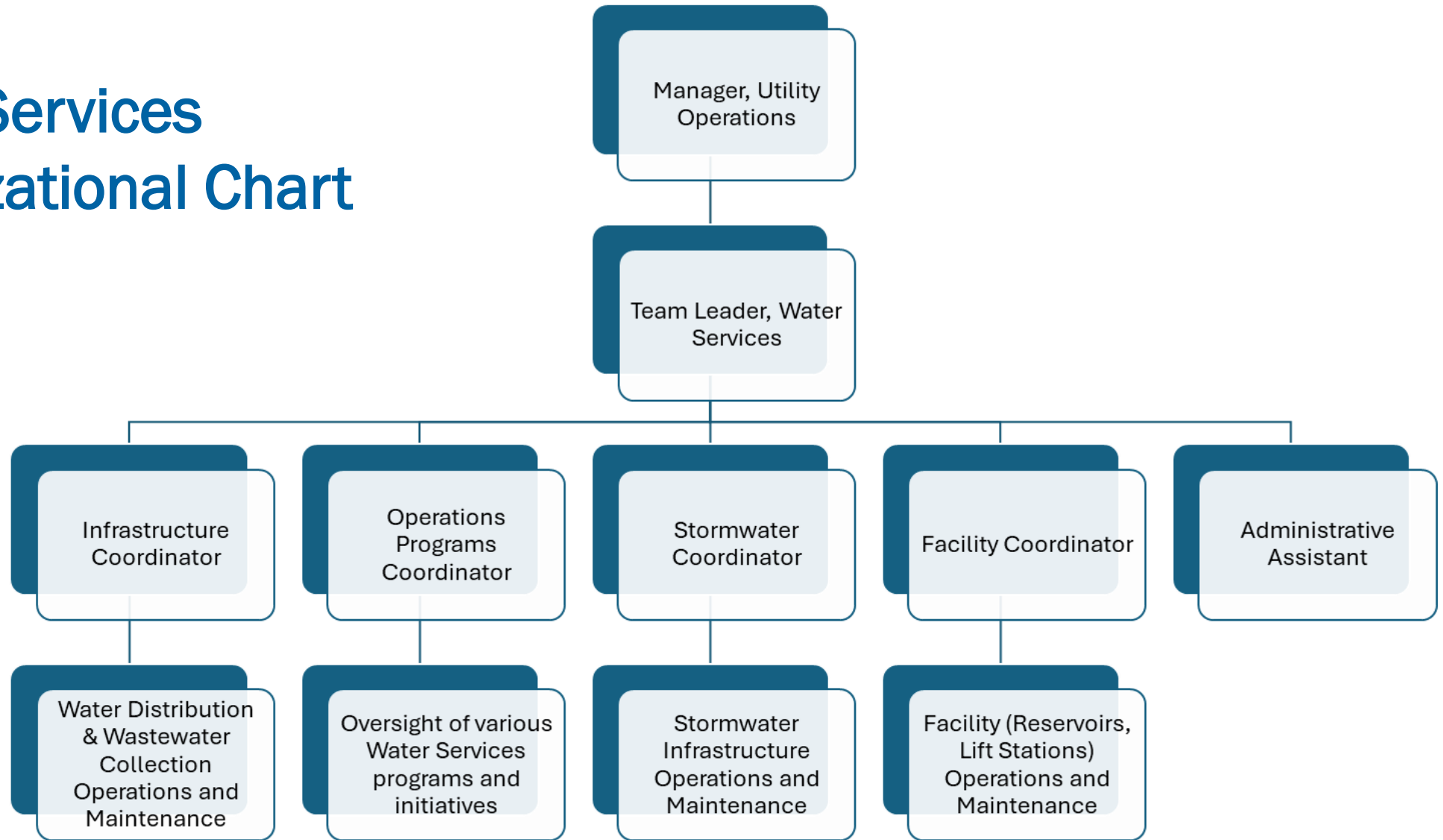
Water Services:

- Responsible for the operation and maintenance of water, wastewater, and stormwater infrastructure for residential, commercial, and industrial customers, as well as the delivery of all associated programs and initiatives.

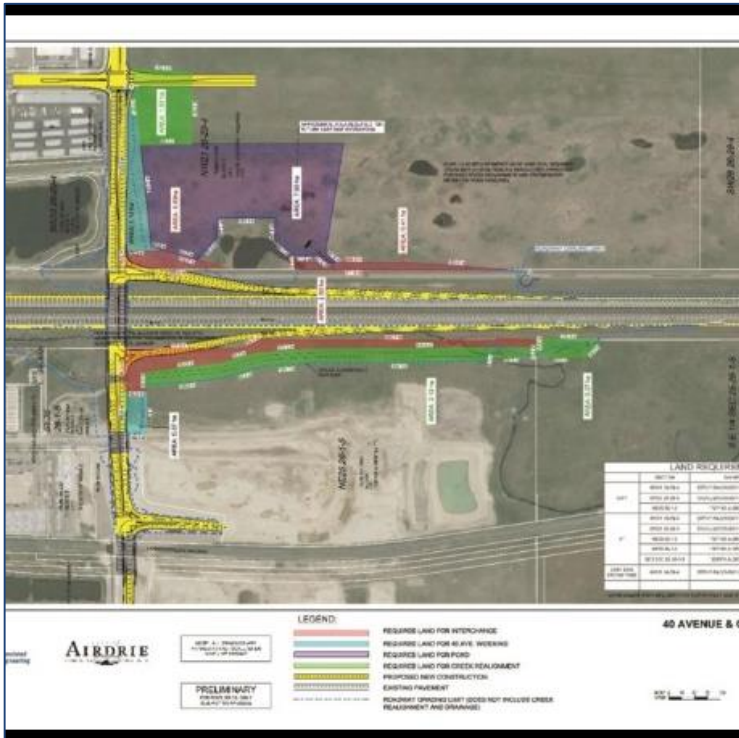
Waste and Recycling Organizational Chart



Water Services Organizational Chart

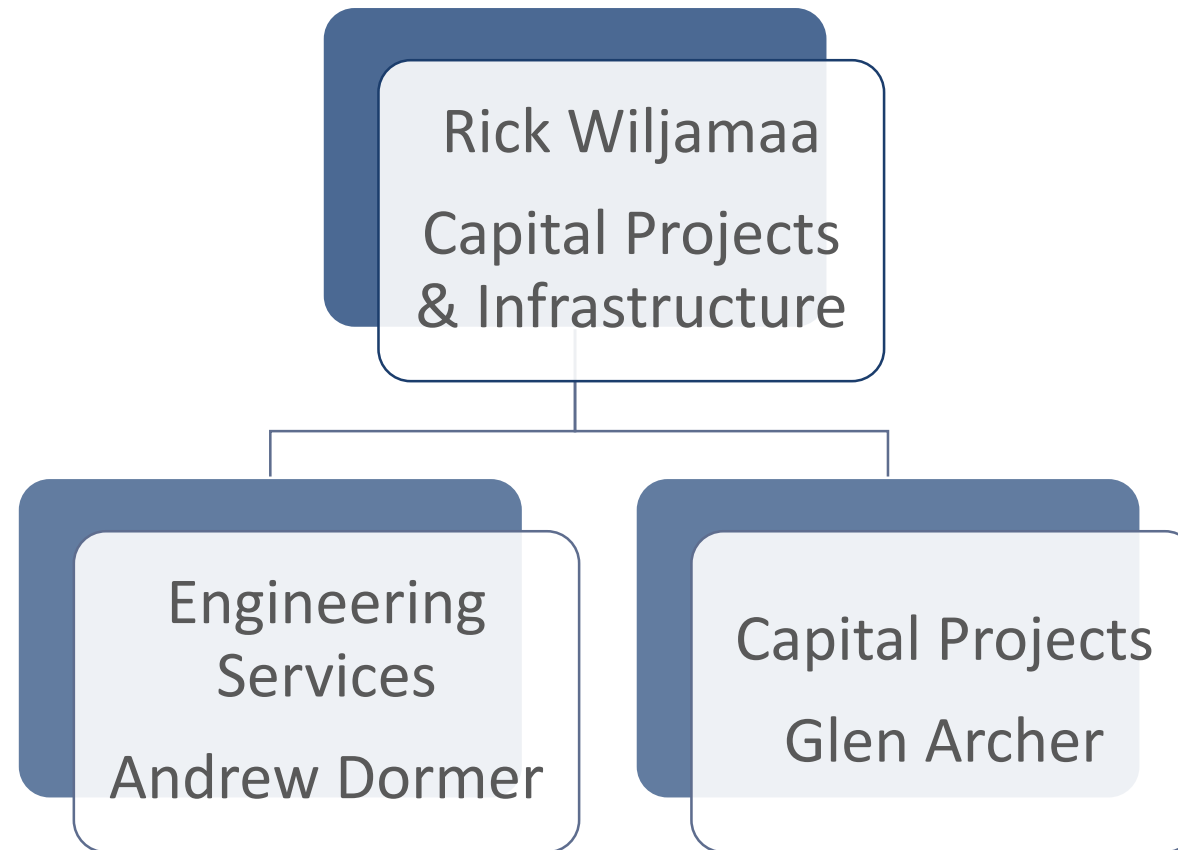


Key Deliverables – Capital Projects & Engineering Services



- Directly or indirectly execute capital projects
- Oversee approvals for infrastructure related to land development Standards and Specifications
- Municipal infrastructure development
- Offsite infrastructure levy development and management
- Long range and short range infrastructure planning
- Strategic / Corporate Capital Investments
 - Civic Campus Investments
 - Public Work Yard investments
 - Transportation investments
 - Land acquisition

Capital Projects and Infrastructure

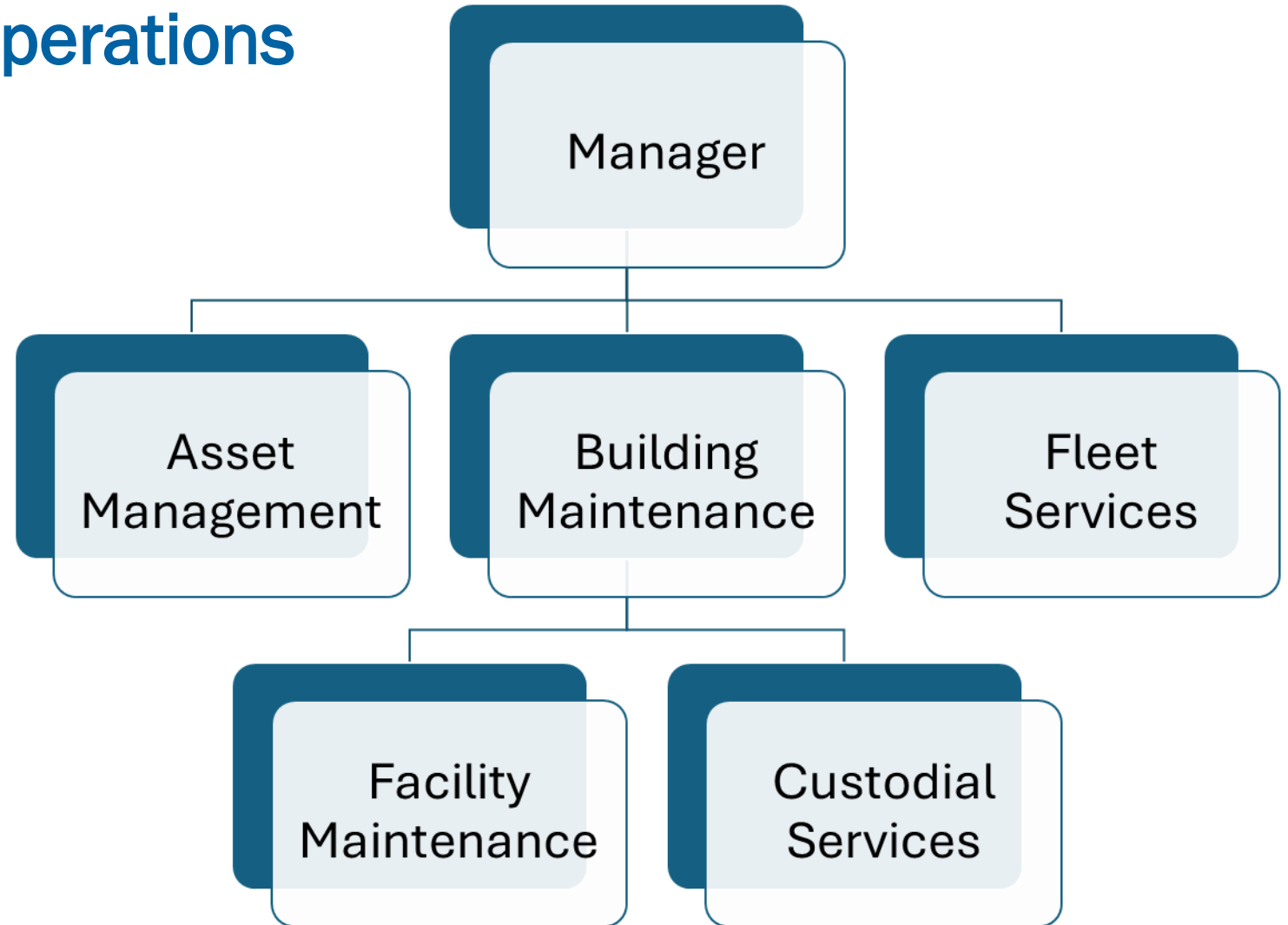


Key Deliverables – Asset Management/Fleet Services/Building Operations



- Effectively manage physical assets to ensure they are well maintained, functioning properly and able to provide essential services to the community.
 - Maintain all-wheeled city assets and mobile equipment
 - Maintain, clean and sanitize city facilities
 - Preventative Maintenance Program (equipment & facilities)
- Use holistic, validated and relevant data to prioritize maintenance activities and develop long-term plans and budgets that consider the future needs of the community.
- Work with stakeholders to ensure that the City of Airdrie has the necessary funding and resources in place to effectively take care of its infrastructure, fix them when needed and replace them when necessary.

Asset/Fleet/ Building Operations Organizational Chart



Notable Issues

- Growth has advanced timeframes for major sewer and water upgrade projects (eg. Airdrie to Calgary)
- Master Servicing Agreement with Calgary for water and wastewater
- Infrastructure 'pinch points' associated with growth (eg. congestion around schools, key intersections, etc.)
- Increased construction costs/contractor capacity constraints, especially with specialized projects
- Offsite Levies/Community Facilities charges under review
- Long lead teams for specialized equipment and parts
- Black Bin and Extended Producer Responsibility (EPR) Implementation
- Green Fleet Strategy under development
- Increased microbility impacts on pathways and intersections
- Snow and Ice Service Level Review
- State of City Infrastructure Report and evolution of Asset Management Program

Current Issues/Initiatives Continued

- Capacity to meet internal risk & safety requirements
- Additional resources required to meet growth of the City, including new facilities such as a new expanded recycling depot
- External influences i.e. changes to provincial stormwater regulations and the implementation of the provincial Extended Producer Responsibility (EPR) initiative.
- Off Site Levies (including Community Facilities)
- Major new Water & Wastewater Infrastructure Investments
- Master Servicing Agreement with the City of Calgary
- State of the Infrastructure Report
- Green Fleet Strategy
- Increased micromobility on pathways: conflicts with user types, speeds, winter maintenance, pedestrian activations at signalized intersections.
- Depleting cemetery inventory
- Expectations management: service levels, pest management scrutiny
- Weather implications: snow and ice control, tough growing conditions
- Exploring evolving technologies to address traffic pattern changes